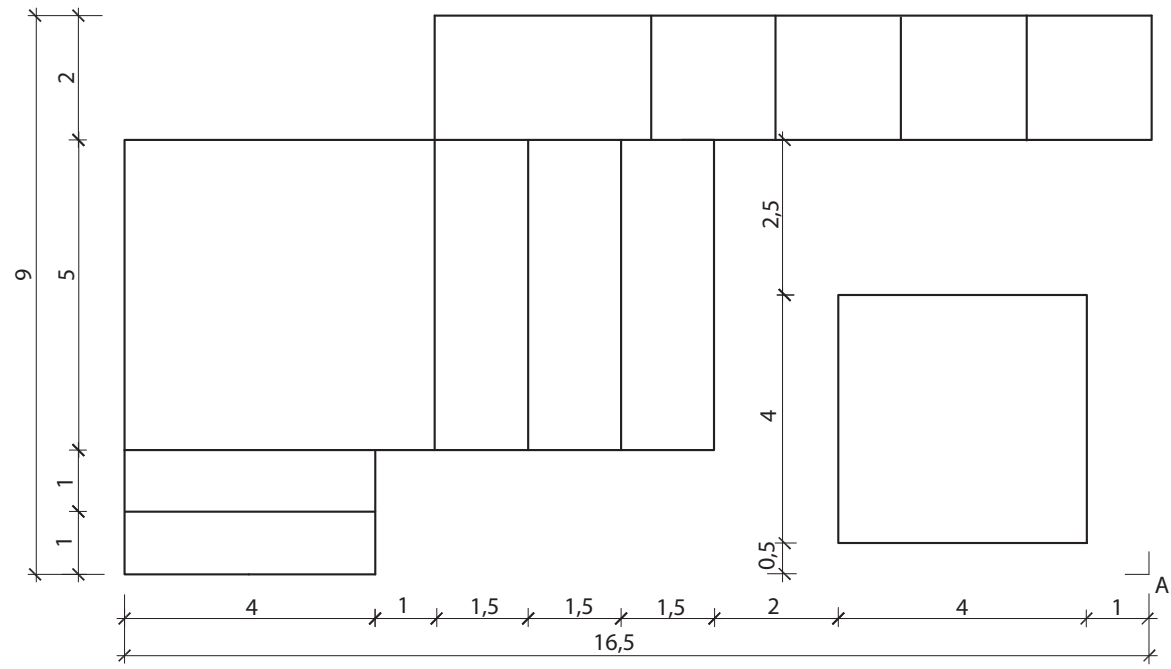
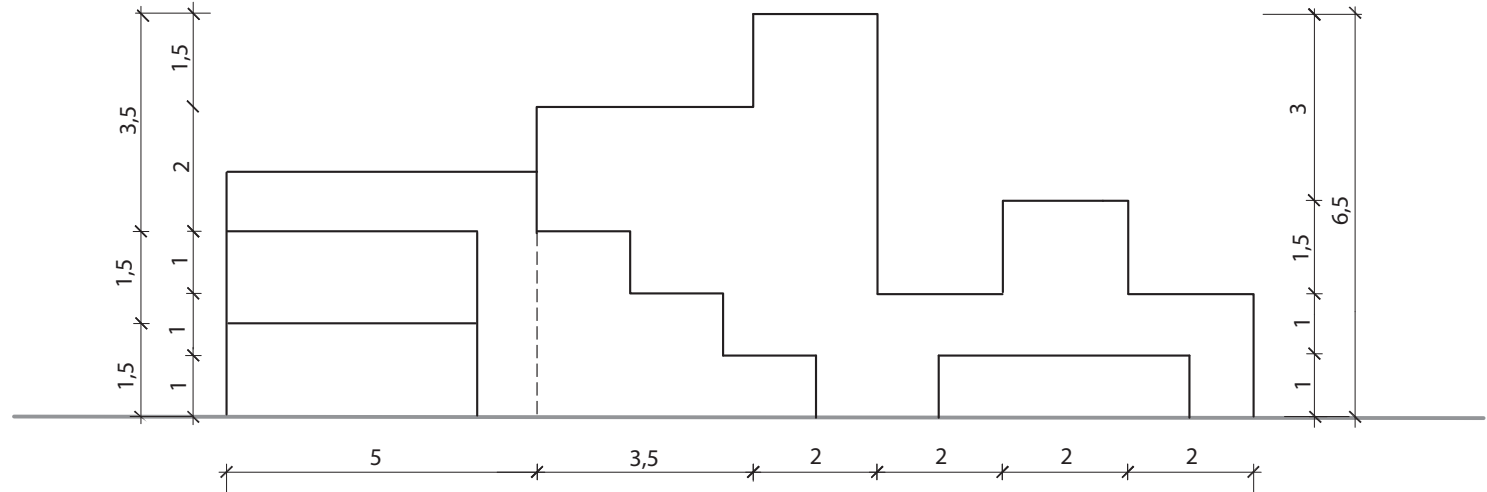
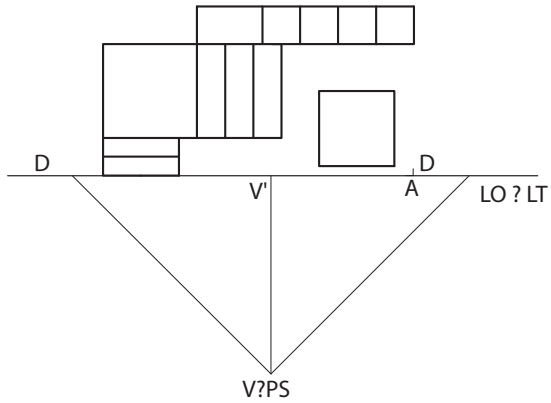


- assonometria ortogonale isometrica in scala 1:1 (R20.1)
- assonometria obliqua monometrica (30°/60°) in scala 1:1 (R20.2)
- prospettiva frontale in scala 2:1 (R20.3)  
 distanza osservatore: 10,5 cm  
 altezza orizzonte: 5 cm  
 $V'D = 10,5$  cm     $V'A = 7,5$  cm



- prospettiva accidentale scala 2:1 (R20.4)  
 distanza osservatore: 9 cm  
 altezza orizzonte: 5 cm  
 $V'F_d = 5,2$  cm     $V'F_s = 15,6$  cm  
 $F_sM_s = 18$  cm     $F_dM_d = 10,4$  cm

